

# Square Pipe Fuse Links With Knife Contacts

## Applications

Protection against overload and short-circuit in electric lines (type gG), also available for protection of semiconductor parts and equipment against short-circuit (type aR) and protection of motors (type aM).

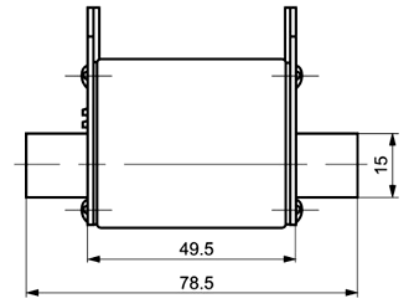
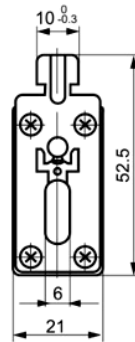
Rated voltage up to 690V; Rated current up to 160A; Working frequency 50Hz AC; Rated breaking capacity up to 100kA. Compliant with GB13539 and IEC269.

## Design Features

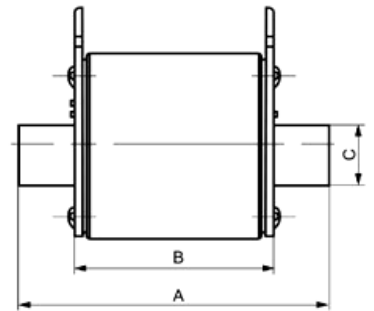
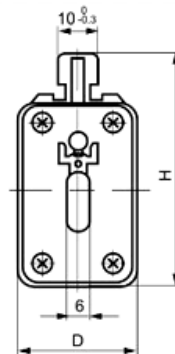
Variable cross-section fuse element made from pure copper or silver sealed in cartridge made from high-duty ceramic. Fuse tube filled with chemically treated high-purity quartz sand as arc-extinguishing medium. Dot-welding of fuse element ends to the terminals ensures reliable electric connection and forms insert knife type contacts. Indicator or striker may be attached to the fuse link to show cutout of fuse or to give various signals and to cut the circuit automatically.



Fuse Link 100A



Fuse Link 160A



Model	Dimension/Size(mm)					Weight (g)
	A	B	C	D	H	
EDS						
NH00	78	50.5	15	30	60	201

## Order Sheet:

Description	Rating (A)	Reference
Fuse Link 00C 40A 500V 100kA.690V 50kA	40	EDSFL00040A
Fuse Link 00C 50A 500V 100kA.690V 50kA	50	EDSFL00050A
Fuse Link 00C 63A 500V 100kA.690V 50kA	63	EDSFL00063A
Fuse Link 00C 80A 500V 100kA.690V 50kA	80	EDSFL00080A
Fuse Link 00C 100A 500V 100kA.690V 50kA	100	EDSFL000100A
Fuse Link 00 125A 500V 100kA.690V 50kA	125	EDSFL000125A
Fuse Link 00 160A 500V 100kA.690V 50kA	160	EDSFL000160A